

Gweike Tech Co.,Ltd.

Fiber Laser R&D Production Factory Address:

No. 58 Chuntian Rd., High-tech Zone, Jinan, Shandong

Metal Component Fabrication Factory Address:

No. 6158 Wenquan Rd., High-tech Zone, Jinan, Shandong

Integrated Intelligent Automation Manufacturing Factory Address:

No. 2999 Keji Rd., High-tech Zone, Jinan, Shandong

TEL: +86-531-88020976

Fax: +86-531-88912386

Http://www.gwklaser.com

E-mail:wkcult@163.com

Gweike (Shenzhen) Intelligence Equipment Technology Co., Ltd.

Address:Fuhai International Technology Park Block A, Shenzhen City, Guangdong Province

Gweike (Guangdong) Intelligence Equipment Technology Co., Ltd.

Address: No. 1 East Shenghang Road, Chang 'an Town, Dongguan City, Guangdong Province

Disclaimer: The product-related parameters contained in this brochure are standard reference data, and all product pictures are for reference only, and the product will follow our process upgrade changes accordingly, and the relevant information of the product shall be referred from our sales engineer. All copyright reserved by Gweike Laser.



GWEIKE LASER OFFICIAL QR CODE



SEARCH "GWEIKE LASER" ON TIKTOK

National sales hotline 24/7

400-8061-521

National after-sale hotline 24/7

400-6586-086

LASER TECHNOLOGY

G·WEIKE
LASER



COMPANY INTRODUCTION



Established In
2004 Year

Production Base
200000+ m²

Annual Output
20000+ Sets

Global sales
100000+ Sets

Gweike Laser is a high-tech enterprise integrating R&D, production, sales and service. It has always been committed to leading the innovation and upgrading of laser equipment and providing high-quality full-scene laser intelligent solutions for global customers. The company has high-standard sheet metal production capacity, scientific and efficient assembly lines, and a comprehensive and systematic service network. Its products are exported to more than 180 countries and regions around the world.



Shandong first production base



Shandong sheet metal supporting production base



Fiber R&D and production base



Intelligent comprehensive production base



Shenzhen R&D Center



Guangdong production base

Based on research and development, driven by innovation, Gweike Laser continues to increase investment in R&D and introduce professional talents, and has created a R&D team with strong professional skills and strong comprehensive quality, which has created the ability to develop more than 5 new products every year. At the same time, Gweike laser has established a number of its own R&D centers around the world, and continues to carry out technical breakthroughs and product interpretations in core areas such as high-power cutting, flexible automation, three-dimensional five-axis technology, new energy power batteries, and ultra-precision cutting. Its technological innovation capability has always been at the forefront of the industry.

► Professional ► Dedicated ► Innovative ► Efficient

TEAM INTRODUCTION

Struggling type employees

1000+

Professional R&D personnel

200+

After sales engineer

300+

Enterprise Vision

G.WEIKE Good Quality,Let The World Be Proud

Core Values

Customer-centric,quality supreme,
innovative development,sincerity
with others,unity
and cooperation,immediate action

Mission

Laser technology makes a better life

HONOR CERTIFICATE

After years of industry accumulation and precipitation, Gweike Laser has been continuously working hard in research and development, and has obtained more than 130 authorized patents for products and technologies through European joint CE, US FDA and ISO9001 certifications. Gweike Laser has won many honors such as National-level specialized and special new "little giant" enterprise, National High-tech Enterprise, China Appearance Patent Excellence Award, China Good Technology, Shandong Gazelle Enterprise, and the first batch of "Good Products Shandong" brand enterprises in Shandong Province.

In 2021, Gweike has been rated as a high-end brand in Shandong Province, with a brand value of 3.121 billion RMB.





57/ Automatic loading and unloading GAS

59/ Double machine automatic loading and unloading GAL



Bending Center /63



3D robot fiber laser cutting /67



3D laser welding machine /67



Three in one handheld laser welding, cleaning, cutting machine /68



Dual driver gear rack fiber laser cutting machine LN/09



High power laser cutting machine CN/10



Double platform laser cutting machine GA/11



Ultra-high power ultra-large format laser cutting machine DH/13



Ultra large format fiber laser cutting machine ASE/15

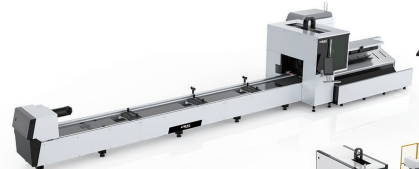


P/21

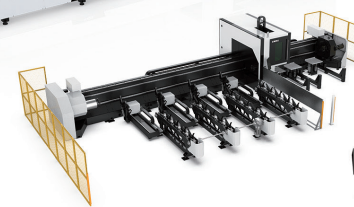
Whole cover fiber laser cutting machine



45/6016T2 Precision laser pipe cutting machine



41/6024T2 All-round laser pipe cutting machine



39/6036T3 Heavy duty laser pipe cutting machine



33/CNR
Plate and pipe fiber laser cutting machine

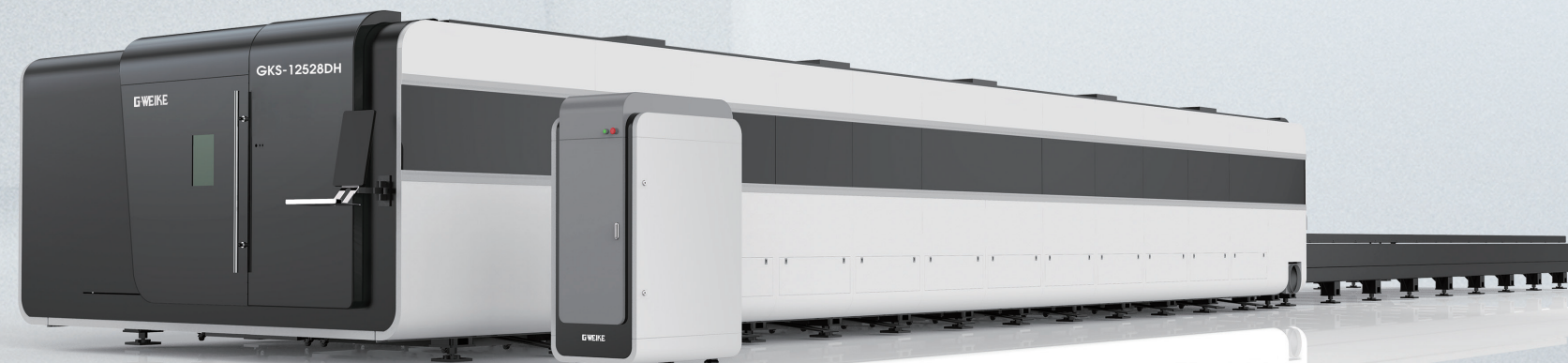


31/LNR
Plate & pipe laser cutting machine



29/GAR
Pipe & plate dual-use fiber laser cutting machine





Professional cutting board , thick board can be cut immediately after penetration, cutting is stable and efficient , magnificent style.

PROFESSIONAL PLATE SERIES

09/10 | Dual Driver Gear Rack Fiber Laser Cutting Machine LN Series



09/10 | High Speed Fiber Laser Cutting Machine CN Series



11/12 | Double platform laser cutting machine GA series



13/14 | Ultra-high power ultra-large format laser cutting machine DH series



15/16 | Ultra Large Format Fiber Laser Cutting Machine ASE Series



17/18 | Floor rail type large format high-end cutting machine SL series



17/18 | Floor rail type large panel beveling cutting machine SLG series



19/20 | Single Platform Laser Cutting Machine C Series



21/22 | Whole Cover Fiber Laser Cutting Machine P Series



21/22 | Economical Laser Cutting Machine E Series



LN SERIES

DUAL DRIVER GEAR RACK FIBER LASER CUTTING MACHINE



TECHNICAL PARAMETERS	
Machine model	LF3015LN
Laser power	3000W/2000W/1500W/1000W(Optional)
Dimensions	4440*2500*1860mm
Working area	3000mmx1500mm
Repeated positioning accuracy	±0.02mm
Max. running speed	80m/min
Max. acceleration	1G
Specified voltage and frequency	380V 50HZ/60HZ

CN SERIES

HIGH SPEED FIBER LASER CUTTING MACHINE

Application materials

Used for cutting a variety of metal plates, mainly used in stainless steel,carbon steel,galvanized sheet, electrolytic plate, brass, aluminum ,steel, various alloy plate, raremetal and other materials.



TECHNICAL PARAMETERS	
Machine model	LF3015CN
Laser power	6000W/4000W/3000W/2000W/1000W(Optional)
Dimensions	4440*2500*1860mm
Working area	3000mmx1500mm
Repeated positioning accuracy	±0.02mm
Max. running speed	120m/min
Max. acceleration	1.5G
Transmission	Double driver rack gear

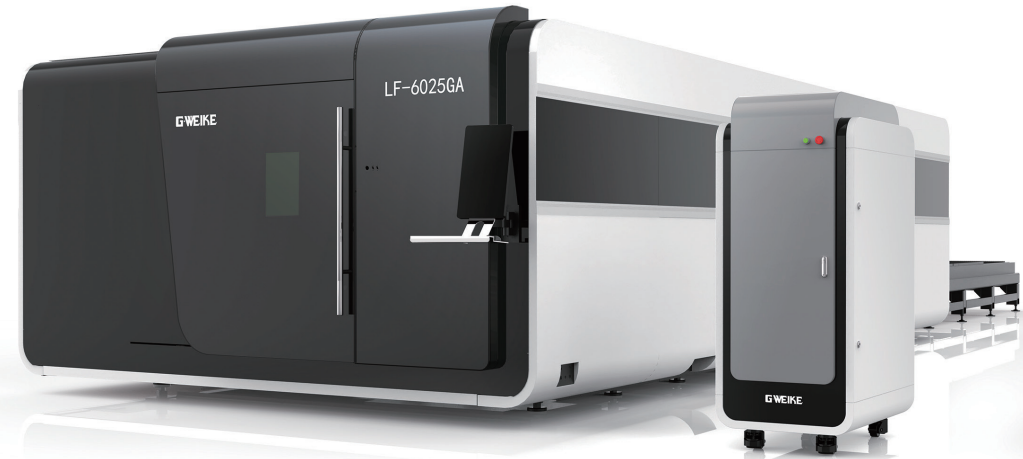
GA SERIES

DUAL PLATFORM FIBER LASER CUTTING MACHINE



High and low exchange table, high loading and unloading efficiency

The 15s exchange platform adopts the upper and lower, high and low exchange platforms; it is safe and practical, greatly improves production efficiency and saves labor costs. The exchange motor is controlled by the frequency converter to realize the rapid exchange of the platform and effectively avoid the mechanical failure.



TECHNICAL PARAMETERS				
Machine model	LF8025GA	LF6025GA	LF4020GA	LF3015GA
Working area	8000*2500mm	6000*2500mm	4000*2000mm	3000*1500mm
Laser power	1500W/2000W/3000W/4000W/6000W			
X/y axis positioning accuracy	±0.03mm			
X/y axis repeat positioning accuracy	±0.02mm			
Dimensions	19170*4018*2755mm	14740*3350*2310mm	10800*3350*2310mm	8850*2850*2310mm
Power rated voltage and frequency	380V 50HZ/60HZ			

DH SERIES

ULTRA-HIGH POWER ULTRA-LARGE FORMAT LASER CUTTING MACHINE DH SERIES

Application field

Agricultural machinery, Steel structure, Mining machine, Sheet metal processing, Equipment, Construction machinery.

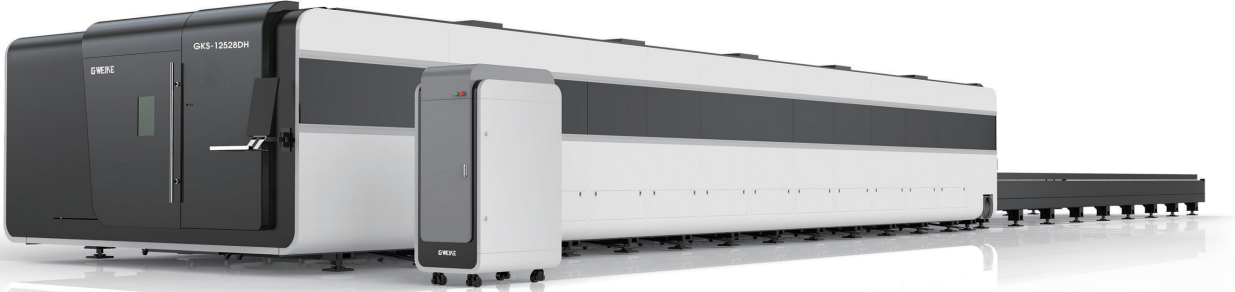


Bus System High-end Intelligence

It adopts a high-end bus-type cutting system, which has powerful functions and stable operation. It is easy to use after training and easy to deploy and operate.

High quality and stable bed

The bed is welded with super-heavy steel plates, and the de-hardening annealing technology + internal reinforcing rib support ensures high strength and stability, and lays a solid foundation for high-speed cutting.



TECHNICAL PARAMETERS					
Machine model	GKS12528DH	GKS12025DH	GKS 8025DH	GKS 6025DH	GKS 4020DH
Working area	12500*2800mm	12000*2500mm	8000*2500mm	6000*2500mm	4000*2000mm
Laser power	30000W/20000W/15000W/12000W				
X/y axis positioning accuracy	±0.03mm/td>				
X/y axis repeat positioning accuracy	±0.02mm				
Dimensions	29640*4330*2755mm	27620*4018*2755mm	20060*4018*2755mm	15000*4018*2755mm	10450*3450*2580mm
Power rated voltage and frequency	380V 50HZ/60HZ				

ASE SERIES

ULTRA LARGE FORMAT FIBER LASER CUTTING MACHINE

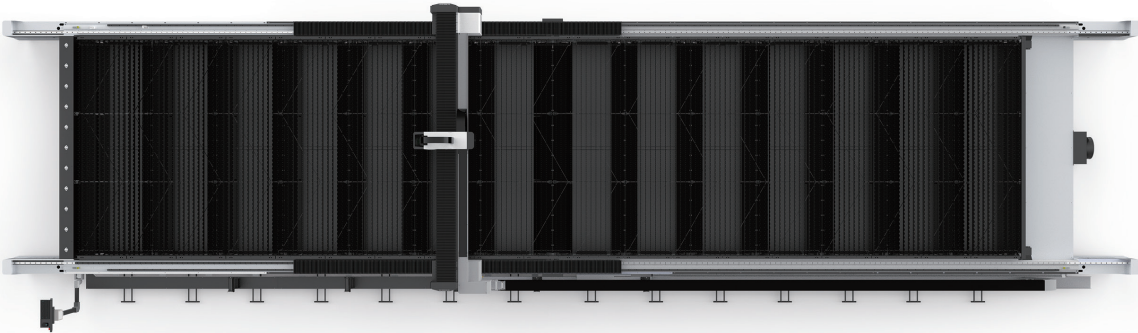
Super large format, the whole board is loaded

The super large processing table supports the whole board and multiple boards to be loaded at one time, which greatly improves the production efficiency. The 10,000-watt power greatly improves the penetrating power and achieves high-quality cutting results.



Application field

Agricultural machinery, Construction machinery, Sheet metal manufacturing, Car manufacturer, Steel structure.

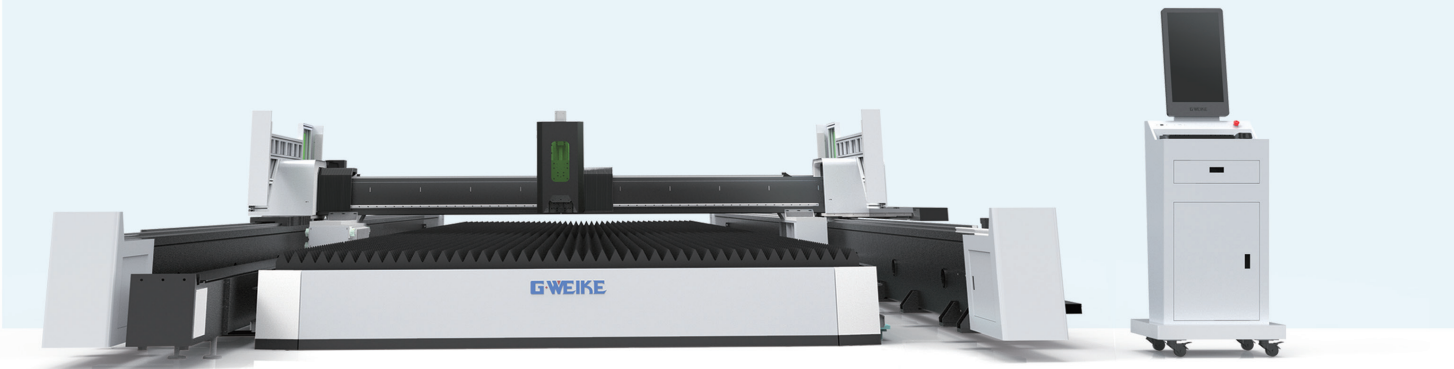


TECHNICAL PARAMETERS	
Machine model	14025 ASE
Working area	14000mm*2500mm (Other formats can be customized)
Laser power	12000W/8000W/6000W
X/y axis positioning accuracy	±0.03mm
X/y axis repeat positioning accuracy	±0.02mm
Power rated voltage and frequency	380V 50HZ/60HZ

SL SERIES

FLOOR RAIL TYPE LARGE FORMAT HIGH-END CUTTING MACHINE

The bed supports a maximum width of 4.5m, and the length can be customized to meet the individual processing needs of different customers. It has excellent cutting ability of whole plate and thick plate.



TECHNICAL PARAMETERS				
Machine model	16032SL		22032SL	Equipment processing format supports customization
Working area	16000*3200mm		22000*3200mm	
Laser power	40000W/30000W/20000W/12000W			
X/y axis positioning accuracy	0.1/10m&0.05/5m			
X/y axis repeat positioning accuracy	0.05mm			

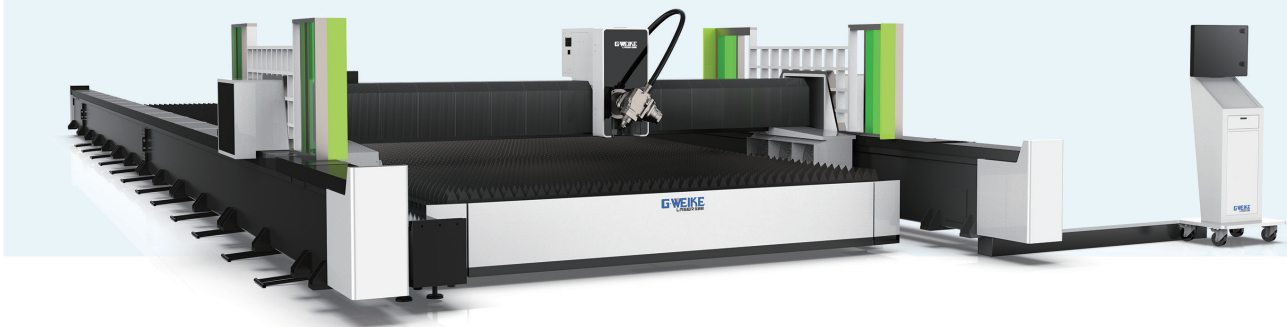
SLG SERIES

FLOOR RAIL TYPE LARGE PANEL BEVELING CUTTING MACHINE

Adopt AB double pendulum structure, support multi-shape full bevel forming and cutting at one time, meet the cutting requirements of 0-45° multi-angle bevel.

Application field

Car manufacture、Aerospace、Rail、Mold processing、Construction machinery、Shipbuilding.



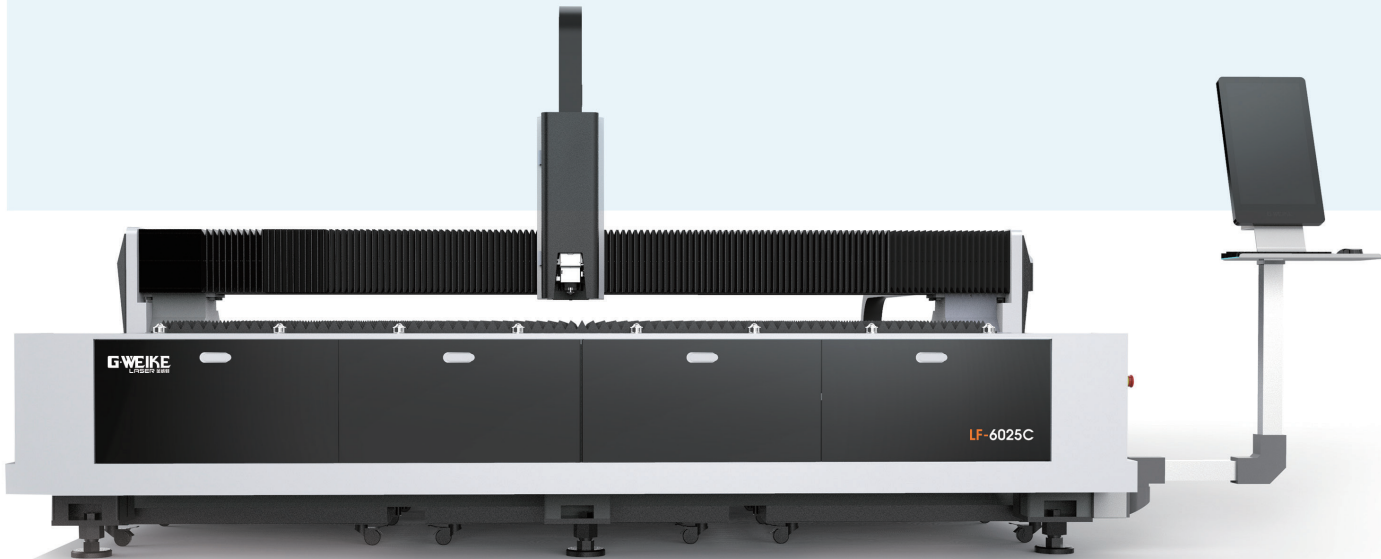
TECHNICAL PARAMETERS				
Machine model	16032SLG		22032SLG	Equipment processing format supports customization
Working area	16000*3200mm		22000*3200mm	
Laser power	40000W/30000W/20000W/12000W			
X/y axis positioning accuracy	0.1/10m&0.05/5m			
X/y axis repeat positioning accuracy	0.05mm			

C SERIES

SINGLE PLATFORM LASER CUTTING MACHINE

Plate welding bed is stable and reliable

The internal structure of the bed adopts aircraft metal honeycomb structure, and reinforcing ribs are arranged . Apply the de-hardening annealing technology to improve the strength and tensile strength of the bed.



TECHNICAL PARAMETERS			
Machine model	LF6025C	LF6015C	LF4020C
Working area	6000*2500mm	6000*1500mm	4000*2000mm
Laser power	2000W/3000W/4000W/6000W		
X/y axis positioning accuracy	±0.03mm		
X/y axis repeat positioning accuracy	±0.02mm		
Dimensions	8156*3646*2260mm	8156*2598*2260mm	6088*3148*2260mm
Power rated voltage and frequency	380V 50Hz/60Hz		

Application field

Car manufacture、Shipping industry、Textile machinery、Construction machinery、Food Machinery、Kitchen cabinets.



P SERIES

WHOLE COVER FIBER LASER CUTTING MACHINE

Application field

Stainless steel、carbonsteel、silicon steel、 aluminum alloy、 titanium alloy、 galvanized steel.



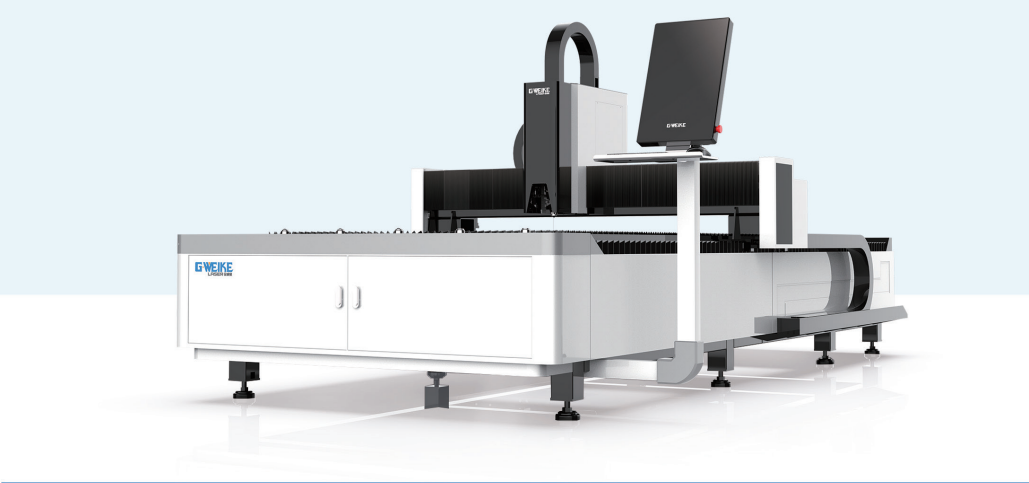
TECHNICAL PARAMETERS	
Machine model	LF3015P
Working area	3000*1500mm
Laser power	6000W/4000W/3000W/2000W/1000W
X/y axis positioning accuracy	±0.03mm
X/y axis repeat positioning accuracy	±0.02mm
Dimensions	4700*3000*2050mm
Power rated voltage and frequency	380V 50Hz/60Hz

E SERIES

ECONMICAL LASER CUTTING MACHINE

Application field

Chassis Cabinet、 Construction machinery、 Sheet metal processing、 Car manufacture、 Elevator manufacturing、 Kitchen cabinets.



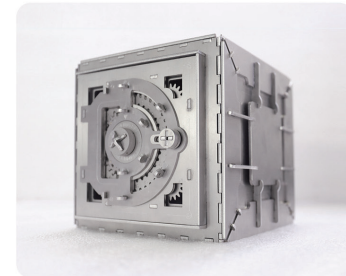
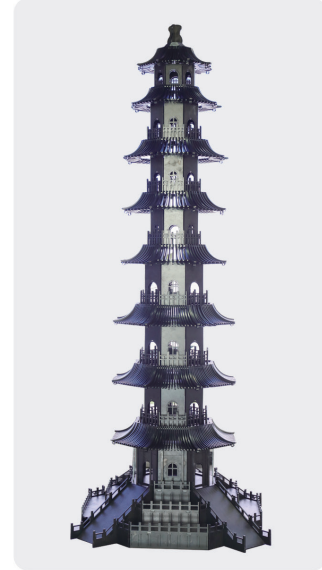
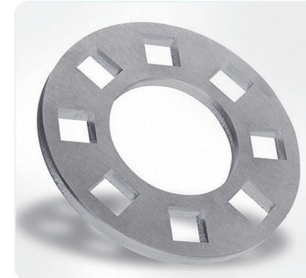
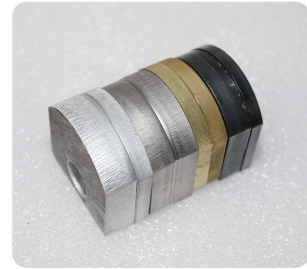
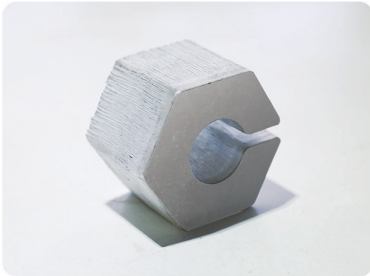
TECHNICAL PARAMETERS	
Machine model	LF3015E II
Working area	3000*1500mm
Laser power	1000W/1500W/2000W/3000W
X/y axis positioning accuracy	±0.03mm
X/y axis repeat positioning accuracy	±0.02mm
Dimensions	4500*2300*1775mm
Power rated voltage and frequency	380V 50Hz/60Hz

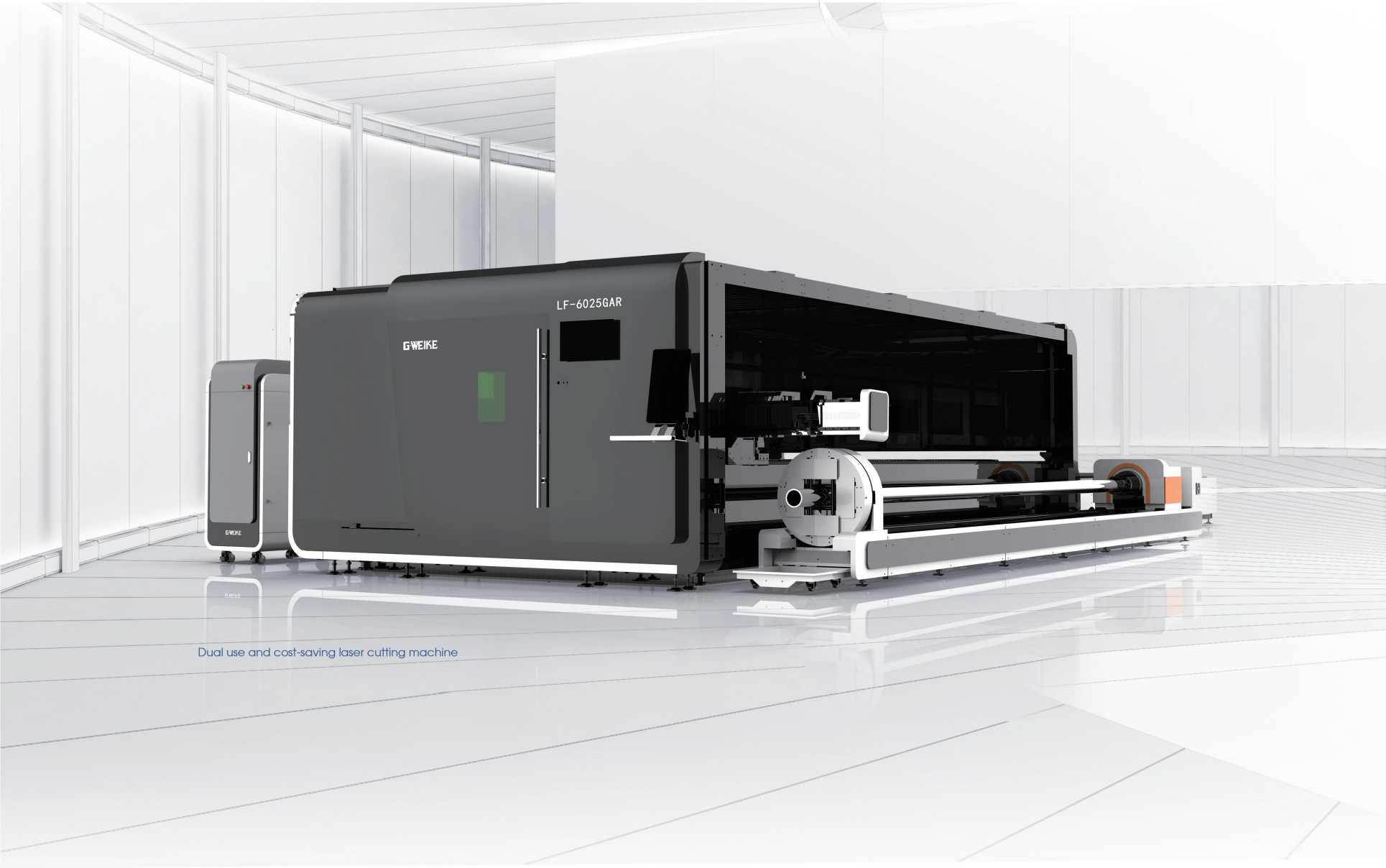
WORLDWIDE MARKETS



known the world over Serve more than 180 countries and regions around the world.

METAL SHEET AND PLATE CUTTING SAMPLE DISPLAY





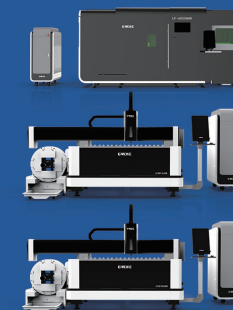
Dual use and cost-saving laser cutting machine

PLATE AND PIPE LASER CUTTING MACHINE SERIES

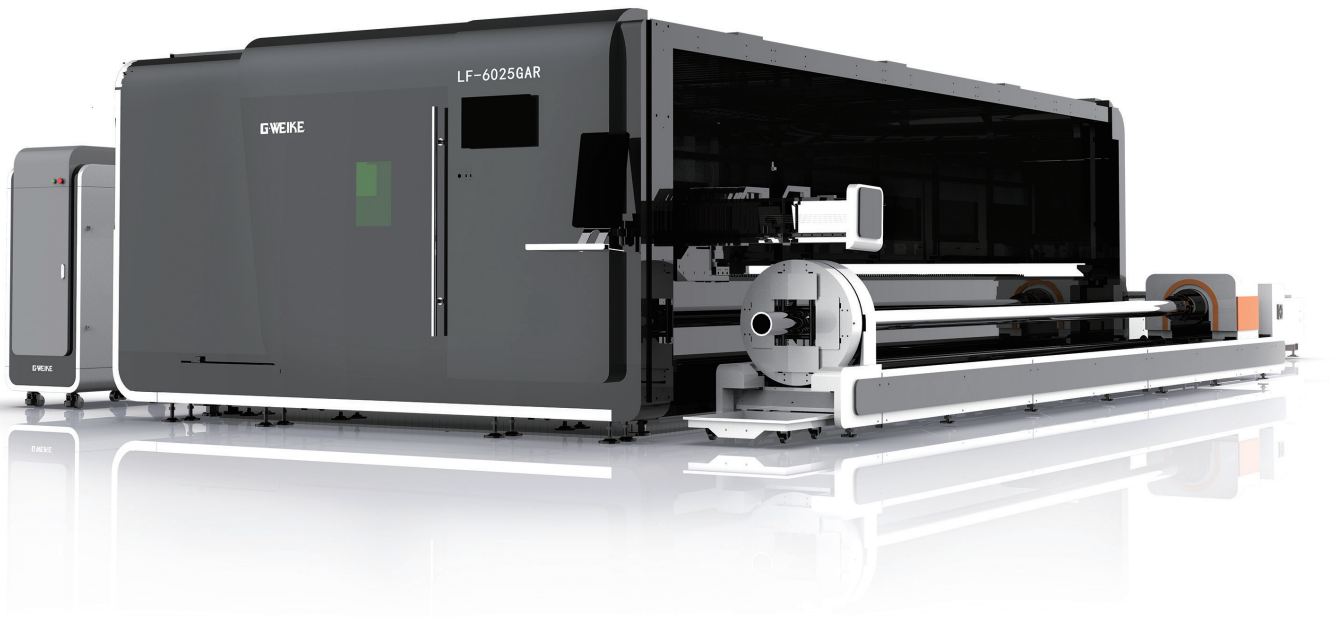
29/30 | Double platform plate and pipe laser cutting machine GAR series

31/32 | Pipe & plate dual-use fiber laser cutting machine LNR series

33/34 | Single platform plate and pipe laser cutting machine CNR series



TECHNICAL PARAMETERS				
Machine model	LF8025GAR	LF6025GAR	LF4020GAR	LF3015GAR
Working area	8000*2500mm	6000*2500mm	4000*2000mm	3050*1500mm
Laser power	1500W/2000W/3000W/4000W/6000W			
X/y axis repeat positioning accuracy	±0.02mm			
Dimensions	19175*6650*2524mm	14140*5015*2254mm	11500*4260*2254mm	9500*3760*2524mm
Chuck structure	240 Pneumatic Chuck			
Clamping range	Round pipe Φ20-240mm Square pipe □20-240mm			
Maximum load of chuck	300KG			
Power rated voltage and frequency	380V 50Hz/60Hz			



GAR SERIES

DOUBLE PLATFORM PLATE AND PIPE LASER CUTTING MACHINE

Heavy-duty centering chuck, fast centering and stable clamping

Large clamping force, high clamping accuracy, long service life, easy to deal with heavy pipes and stable clamping.

High-speed exchange table, to achieve 15s fast exchange

Double platforms are exchanged in parallel, intelligently control the exchange motor, and the machine bed can be exchanged within 15 seconds at the fastest;The chain drive system is adopted, which has strong overload capacity;which is intelligent and safe, and the positioning is clear.



TECHNICAL PARAMETERS	
Machine model	LF3015LNR
Laser power	1000W/2000W/3000W/3000W(Optional)
Dimensions	4050*5650*1860mm
Working area	3000mm x 1500mm
Repeat positioning accuracy	±0.02mm
Chuck structure	240 Pneumatic Chuck
Clamping range	Round pipe \varnothing 20-240mm Square pipe \square 20-240mm
Maximum load of chuck	300KG
Specified voltage and frequency	380V 50Hz/60Hz



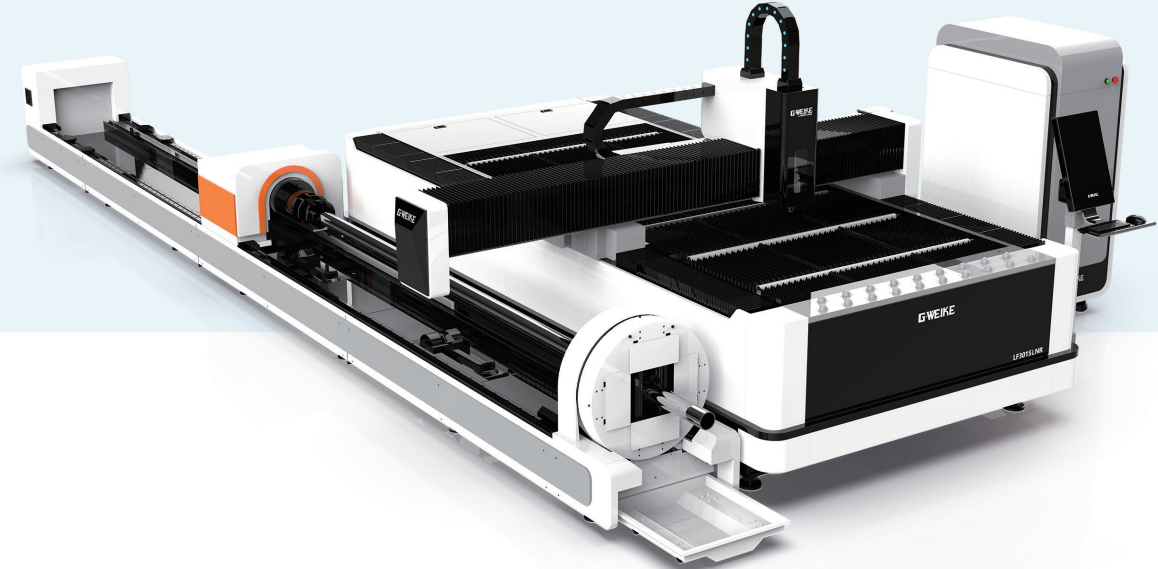
LNR SERIES

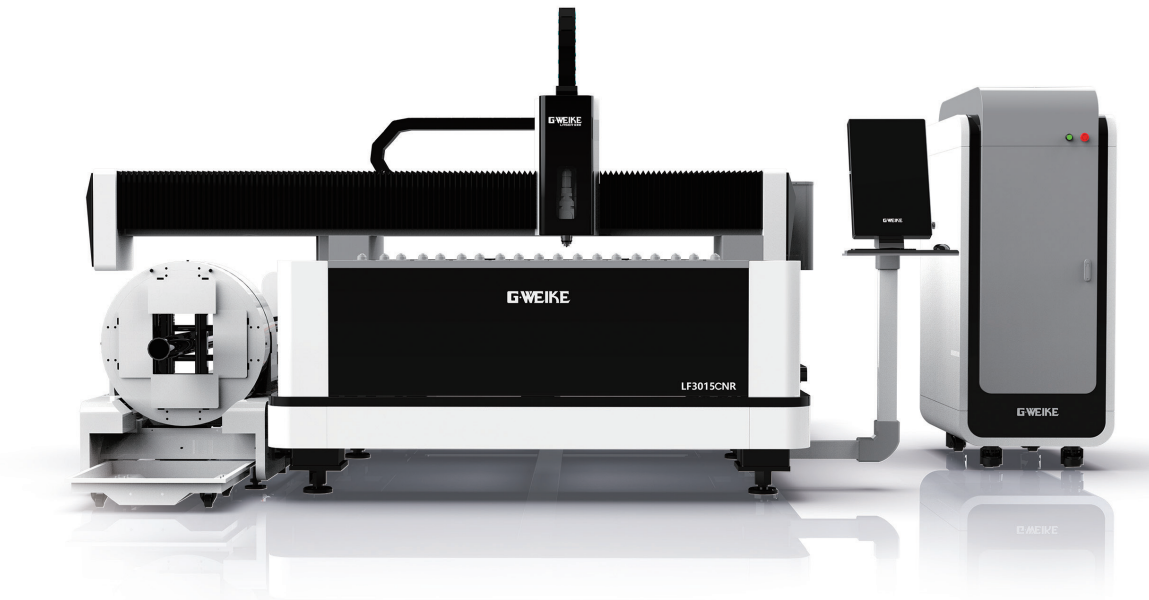
PIPE & PLATE DUAL-USE FIBER LASER CUTTING MACHINE

Application materials

Pipes—Professionally cutting square pipes, round pipes, rectangle pipes,D-shaped pipes and hexagon pipes and etc.Cutting capacity-square pipes: 20*20-240*240, round pipes: \varnothing 20-240mm,more than 0.5mm thickness carbon steel pipes , stainless steel pipes, galvanized steel pipes and other steel material pipes.

Plates——Professional to cutting more than 0.5mm carbon steel, stainless steel,brass, copper,galvanized steel, electrolytic steel ,silicon steel and etc. (thicknesses are related to the kinds of materials and fiber source power)





TECHNICAL PARAMETERS	
Machine model	LF3015CNR
Laser power	2000W/3000W/4000W/6000W
Working area	3000*1500mm
Dimensions	4760*4048*1950mm
X/y axis repeat positioning accuracy	±0.02mm
Chuck structure	240 Pneumatic Chuck
Clamping range	Round pipe Φ20-240mm Square pipe □20-240mm
Maximum load of chuck	300KG
Power rated voltage and frequency	380V 50Hz/60Hz

CNR SERIES

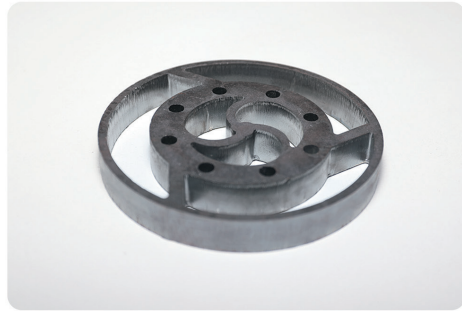
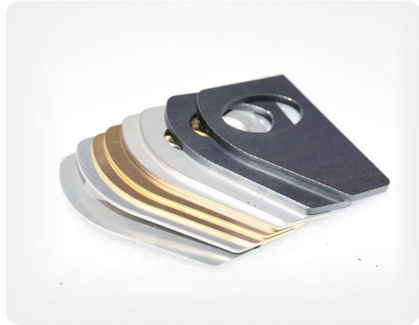
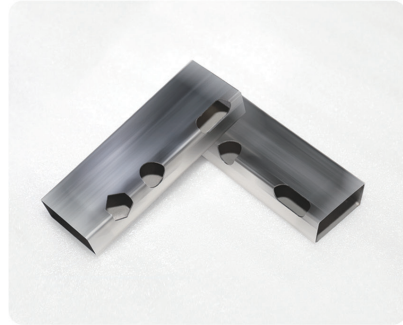
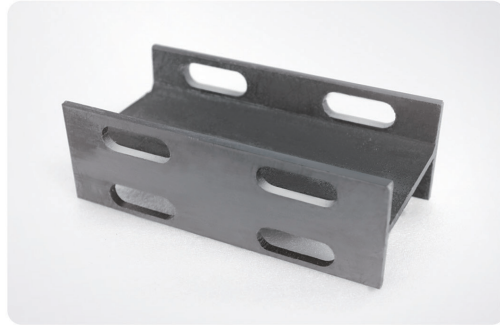
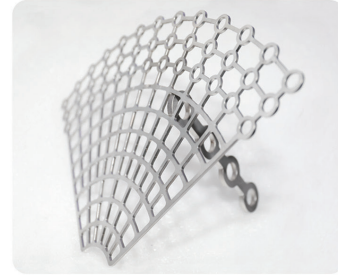
SINGLE PLATFORM PLATE AND PIPE LASER CUTTING MACHINE

- One machine for two purposes, the dual-use choice**

It can meet the multiple needs of cutting pipes and plates, further saving cost and space.
- Pneumatic chuck with automatic centering**

The front and rear pneumatic chucks adopt clamping design, automatically adjust the center, and the diagonal adjustment range is 20~300mm.





SAMPLE DISPLAY OF PLATE AND PIPE LASER CUTTING MACHINE



Super strong pipe cutting, material saving first, strong expansibility, all kinds of pipes, profiles and special-shaped pipes can be cut freely.

PIPE LASER CUTTING SERIES

39/40

Heavy duty laser pipe cutting machine T3 series



41/42

All-round laser pipe cutting machine T2 series



43/44

Bevel laser pipe cutting machine T2G series



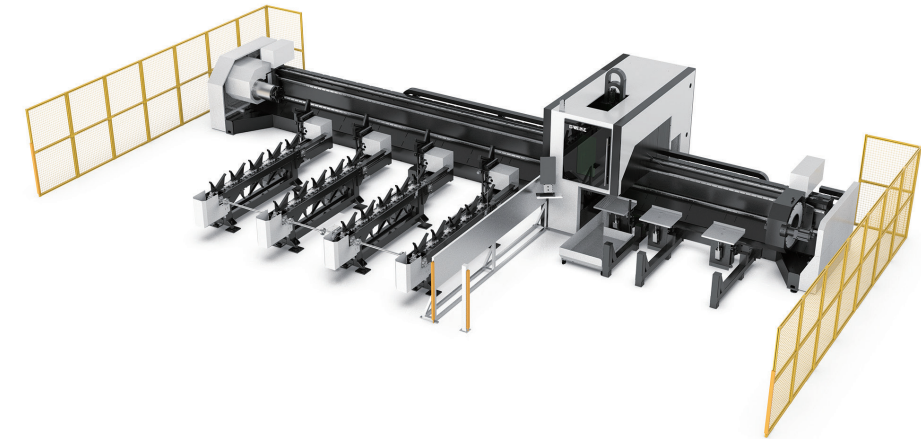
45/46

Precision laser pipe cutting machine T2 series



Application field

Construction machinery、Heavy machinery、Construction machinery、Steel structure building、Bridge engineering、 Oil pipeline、 Elevator manufacturing、 Greenhouse、 Steel smelting Special modified vehicles, etc.



TECHNICAL PARAMETERS			
Machine model	GKS-6036T3	GKS-9036T3	GKS-12036T3
Laser power	3000W-12000W		
Clamping range	Round pipe Φ20-360mm Square pipe □20-250mm		
Maximum rotating speed	80 r/min		
Single pipe load-bearing	700KG		
Repeated positioning accuracy	±0.03mm		
Maximum tube automatic loading length	6500mm	9500mm	12500mm
Maximum tube automatic unloading length	3500mm(Optional)		
Chuck structure	360 Pneumatic Chuck		

GKS-6036T3

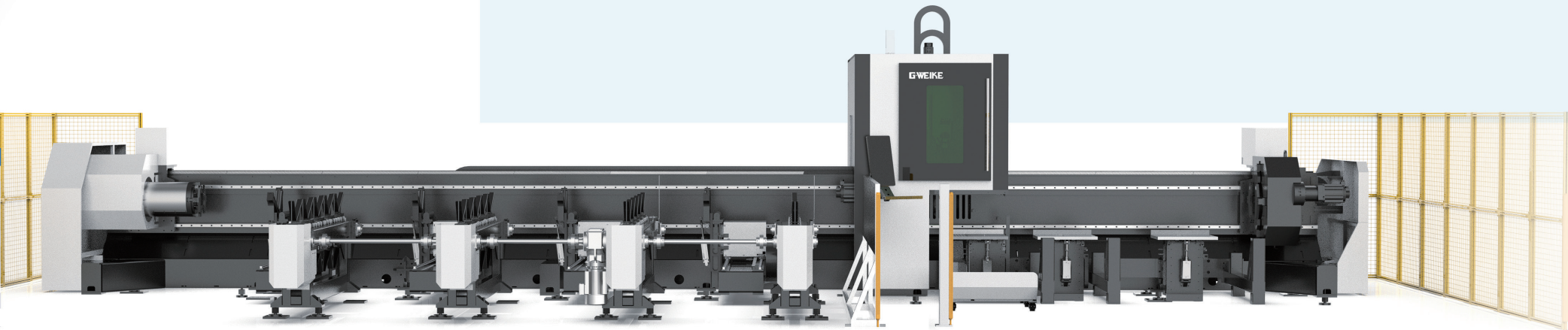
THREE-CHUCK HEAVY DUTY ZERO TAILING PIPE CUTTING MACHINE

Side-mounted design, more stable for heavy pipe cutting

Support pipe diameter Φ20-Φ360, single pipe bearing 700KG. The side-mounted semi-automatic loading and unloading design reduces the center of gravity, reduces vibration, more stable cutting, and more convenient loading and unloading.

Multi-point heavy-duty centering chuck, true zero wastage

The 360 heavy-duty three-chuck is adopted, which has a stronger bearing capacity, stable cutting and high precision, zero tailing production, and material saving.Equipped with bus system and bus motor, fast response, high precision and strong performance.



TECHNICAL PARAMETERS				
Machine model	GKS-6024T2	GKS-9024T2	GKS-12024T2	Can be equipped with automatic loading and unloading or semi-automatic loading and unloading
Laser power	1500W-6000W			
Clamping range	Round pipe Φ20-240mm Square pipe □20-240mm I-beam 10#-22#			
Maximum rotating speed	100 r/min			
Effective cutting length of pipe	6500mm	9500mm	12500mm	
Single pipe load-bearing	300KG			
Chuck structure	240 Pneumatic Chuck/280 Pneumatic Chuck			

GKS-6024T2

ALL-ROUND PIPE CUTTING MACHINE

Stable cutting, high efficiency and material saving

Support pipe diameter Φ 20- Φ 240, follow-up working mode improves the stability and precision of cutting, and solves the problem of deformation during the cutting of long pipes; ultra-short tail material, more material saving and more profit.

Application field

Metal furniture Medical instruments Office desk chair Display props Fitness Equipment.



Application field

Metal processing、Fitness Equipment、Shelves and Trusses、Bicycle、Aerial work vehicle、Vehicle frame.

TECHNICAL PARAMETERS				Can be equipped with automatic loading and unloading or semi-automatic loading and unloading
Machine model	GKS-6024TG		GKS-9024TG	
Laser power	1500W-6000W			
Clamping range	Round pipe \varnothing 20-240mm Square pipe \square 20-240mm			
Maximum rotating speed	100 r/min			
Effective cutting length of pipe	6500mm		9500mm	
Single pipe load-bearing	300KG			
Chuck structure	240 Pneumatic Chuck/280 Pneumatic Chuck			

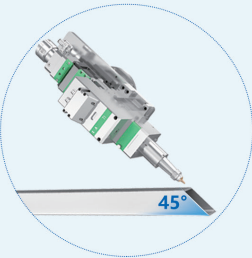


GKS-6024TG

BEVEL LASER PIPE CUTTING MACHINE

Bevel cutting, high efficiency

Equipped with a professional bevel cutting head, it supports high-speed cutting of 0-45 degree bevel, which can solve the problem of pipe welding. The follow-up support improves the stability and precision of cutting, and solves the deformation problem during the cutting of long pipes.



Application field

Metal furniture HVAC Fitness Equipment lamps Medical instruments Office desk chair Display props.

TECHNICAL PARAMETERS				Can be equipped with automatic loading and unloading or semi-automatic loading and unloading
Machine model	GKS-6016T2		GKS-9016T2	
Laser power	1500W-3000W			
Clamping range	Round pipe Φ 10-160mm Square pipe \square 10-160mm			
Maximum rotating speed	140 r/min			
Effective cutting length of pipe	6500mm		9500mm	
Single pipe load-bearing	80KG			
Chuck structure	160 Pneumatic Chuck			

GKS-6016T2

PRECISION LASER PIPE CUTTING MACHINE

Precision Pneumatic Chuck Material saving comes first

Support pipe diameter Φ 10- Φ 160, use 160 precision pneumatic chucks at the front and rear, run without jamming, the maximum rotating speed is 150R/min, the tailing material is \leq 50mm, no material cost, and profits are expanded.

Quick cut small tubes, all tubes can be cut

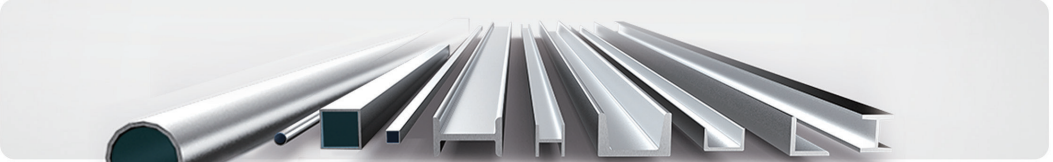
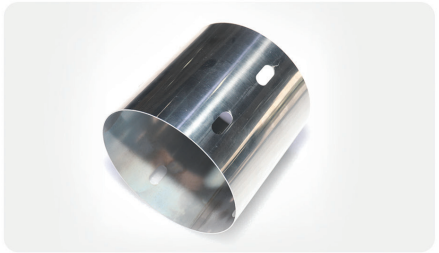
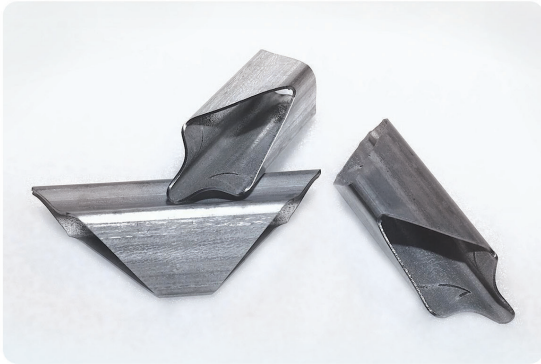
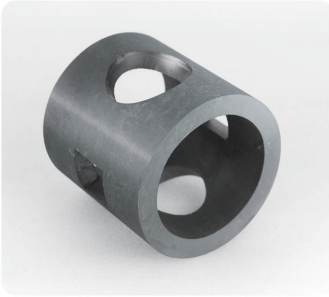
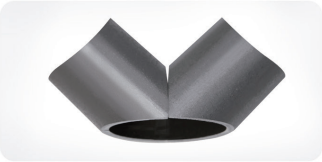
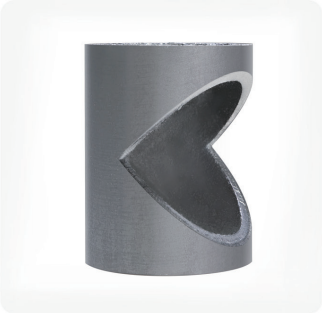
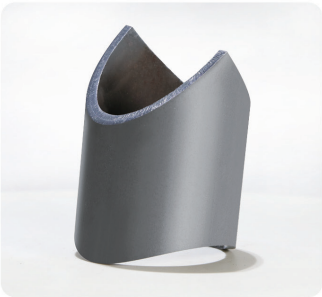
With a special sharp-nosed cutting head, it can cut round pipes, square pipes, rectangular pipes, oval pipes, hexagonal pipes, C-shaped steel, angle steel, and H steel with a diameter or side length of 10-160mm.

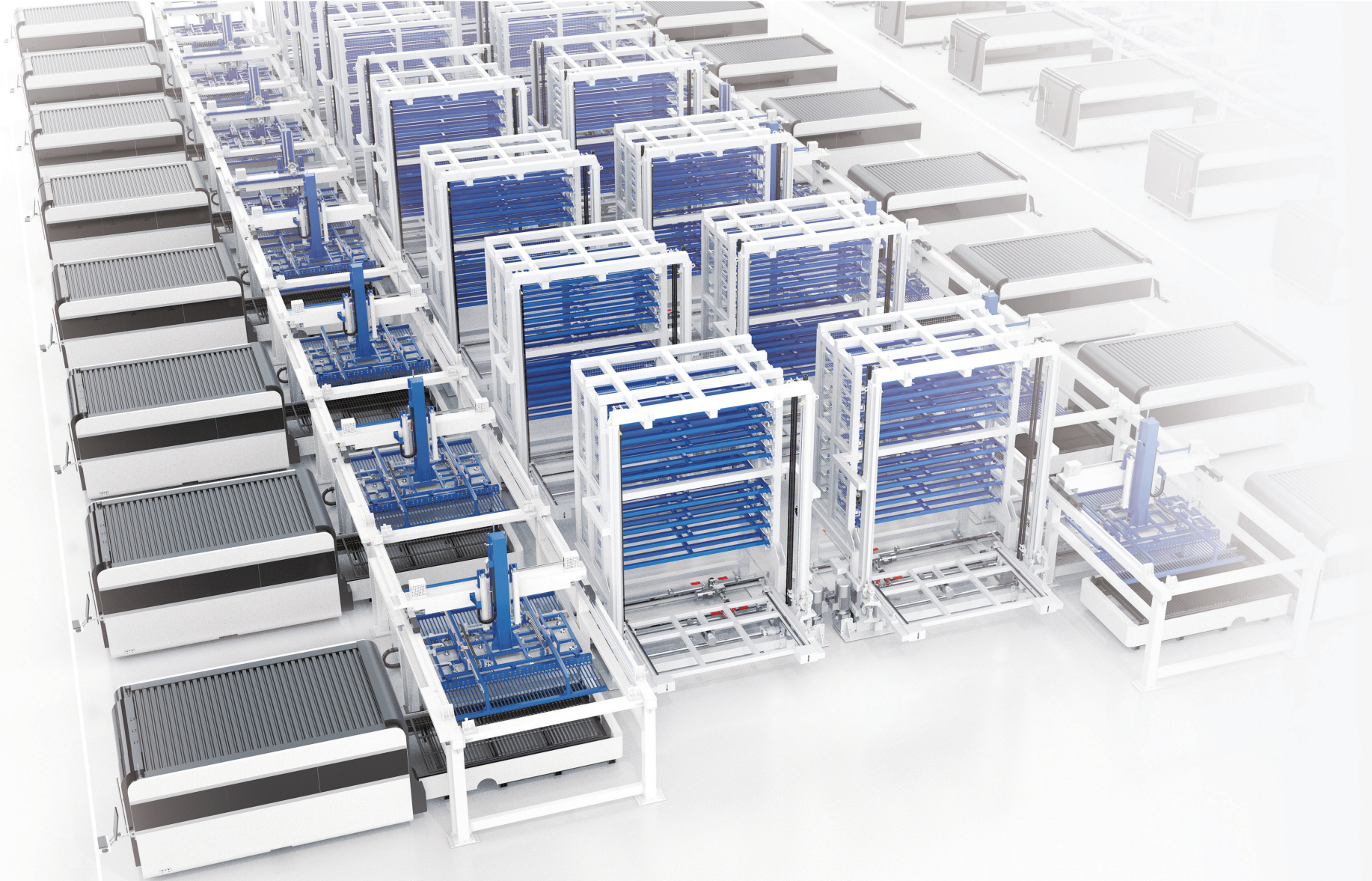
Full automatic loading and unloading system

Semi automatic loading and unloading system



SAMPLE DISPLAY OF PIPE CUTTING MACHINE





AUTOMATIC LOADING SERIES

51/52 | Three-dimensional five-axis laser cutting machine



53/54 | Coil Laser Cutting Production Line MB Series



55/56 | Laser Blanking Production Line LF3016A



57/58 | Automatic loading and unloading GAS series



59/60 | Double machine automatic loading and unloading GAL series



61/62 | Robot intelligent laser high-speed cladding GKS-LC3008R



63/64 | Bending Center



THREE-DIMENSIONAL FIVE-AXIS

LASER CUTTING MACHINE

Arbitrary rotation of cutting head, special-shaped surface processing tool

The three-dimensional five-axis linkage cutting head is independently developed, which can realize N°360° rotation and $\pm 135^\circ$ swing, showing flexible processing strength. The three-dimensional modeling process is formed in one time, and the efficiency and accuracy are double guaranteed.

Elevated gantry structure, double excellent speed and accuracy

Elevated gantry structure + precision servo drive + multi-axis linkage, supported by CAE scientific analysis data, the whole machine structure and core are not finely designed to ensure the dynamic performance and stability of the whole machine.

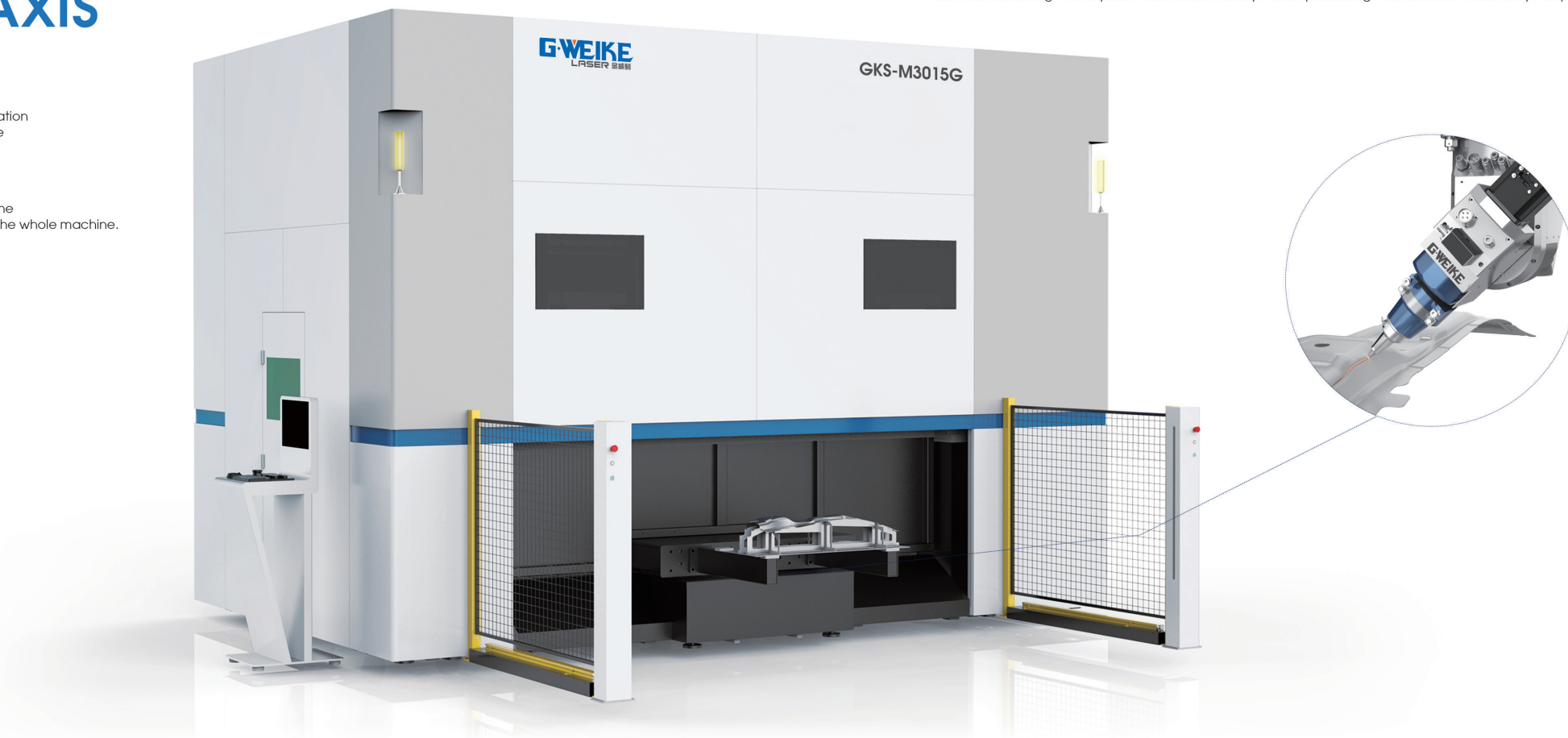
TECHNICAL PARAMETERS	
Three-dimensional five-axis machine	
Distance	GKS-M3015G X axis $\geq 3000\text{mm}$, Y axis $\geq 1500\text{mm}$, Z axis $\geq 650\text{mm}$
Speed	X/Y/Z axis $\geq 100\text{m/min}$
Acceleration	X/Y/Z axis $\geq 1\text{g}$
Positioning accuracy	X/Y/Z axis $\pm 0.05\text{mm}$
Repeat positioning accuracy	X/Y/Z axis $\pm 0.03\text{mm}$
Three-dimensional five-axis cutting head	
Distance	C axis N°360°, A axis $\pm 135^\circ$
Speed	C/A axis $\geq 90^\circ/\text{min}$
Acceleration	C/A axis $\geq 90\text{rad/s}^2$
Positioning accuracy	C/A axis $\pm 0.015^\circ$
Repeat positioning accuracy	C/A axis $\pm 0.005^\circ$

Sample display



Application field

Car manufacturing, Aerospace, Rail transit industry, Mold processing, Construction machinery, Shipbuilding.



MB SERIES

COIL LASER CUTTING PRODUCTION LINE

TECHNICAL PARAMETERS	
Machine model	LF3015MB
Laser power	1000W/2000W/3000W
Dimensions	23125*7192*2555mm
Thickness of coiled material	0.5-3.0mm
Coiled material width	500-1500mm
Coil weight	10T (Customizable)
Feeding speed	Max 20m/min
X/Y axis cutting stroke	1525mm/3025mm
X/Y axis cutting repeat positioning accuracy	±0.03mm
X/Y axis Maximum positioning speed of single axle	100m/min

Intelligent operation and efficient production

It realizes the four functions of automatic opening and leveling, feeding, cutting and unloading of the coil material, and the operation is stable and reliable; Open automatic feeding system, automatic transmission operation platform, completely solve the drawbacks of manual feeding.

Continuous cutting, strong power

The coil conveying equipment is continuously conveyed, and the feeding and discharging run synchronously, with excellent continuous transmission and seamless power cutting connection, which further improves the efficiency.



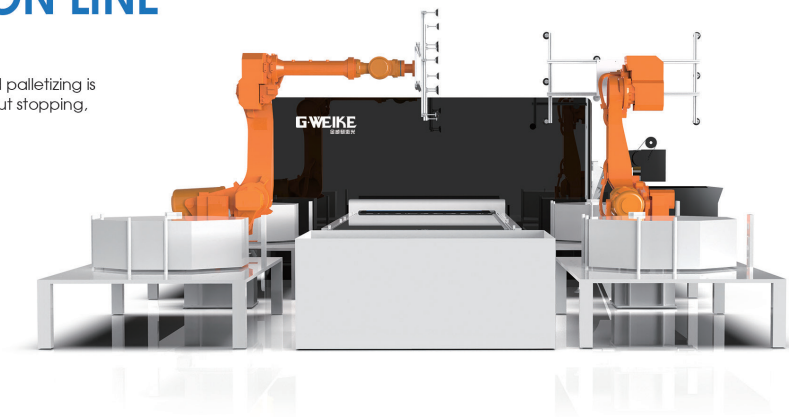
LASER BLANKING PRODUCTION LINE

Automatic and efficient, strong production capacity

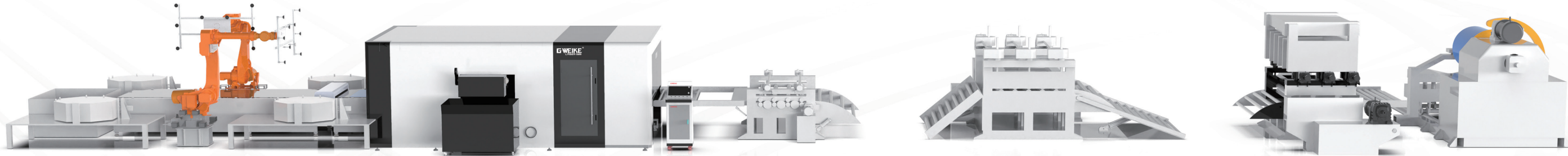
The whole process of feeding, uncoiling, leveling, feeding, cutting, unloading, and palletizing is automated, and it can be continuously and stably cut for 24 hours * N days without stopping, reducing the dependence on labor.

Double-machine palletizing, double the efficiency

Non-contact automatic loading and unloading, dual-robot palletizing, effectively save labor and improve the unloading speed. The code material is neat and orderly, which is convenient for the smooth operation of the next process.



TECHNICAL PARAMETERS	
Machine model	LF3016A
Laser power	1000W/2000W/3000W (OPTIONAL)
Plate thickness	0.5~1.4 mm (as<800MPa, ab<1200MPa) 0.5-2.5mm (as<420MPa, ab<590MPa) 0.5-3.0mm (as<280MPa, ab<500MPa)
Working area	3000X1600mm
Inner diameter of the coil	Φ508mm / Φ610mm
Outside diameter of the coil	<Φ1800mm
Maximum coil weight	15T
Leveling speed (average line speed)	30m/min, Frequency
X/y axis positioning accuracy	±0.05mm/m
X/y axis repeat positioning accuracy	±0.03mm
X/y axis maximum linkage speed	120m/min
Power rated voltage and frequency	380V/50Hz
Dimensions	27759*9495*2600mm



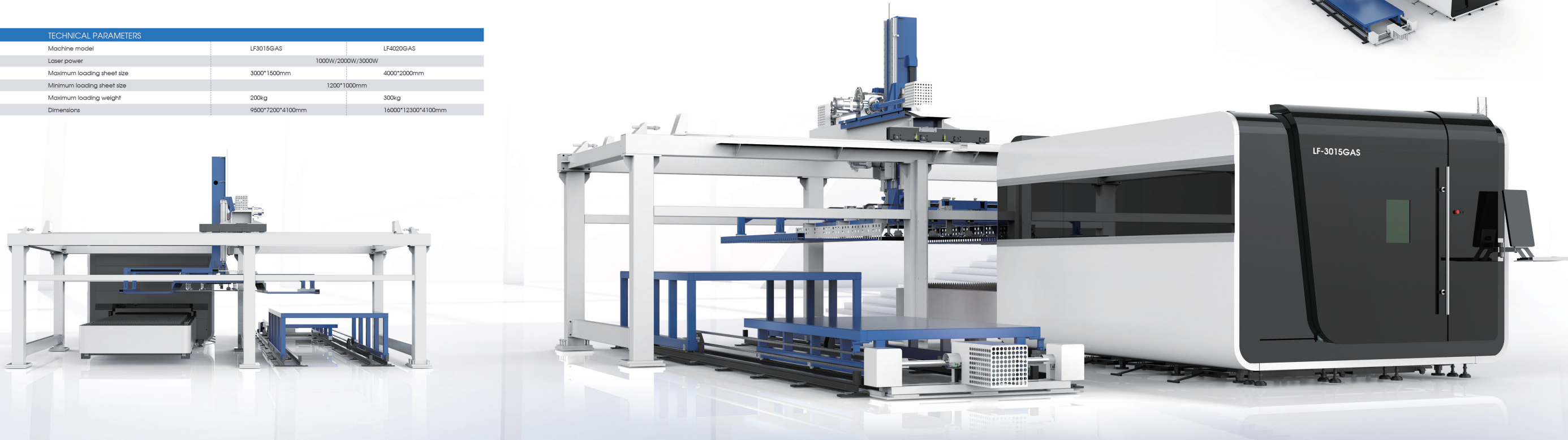
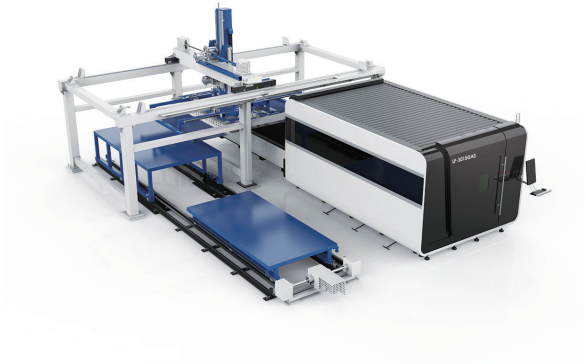
GAS SERIES

AUTOMATIC MATERIAL STORAGE SYSTEM FOR MEDIUM AND HEAVY PLATES

TECHNICAL PARAMETERS		
Machine model	LF3015GAS	LF4020GAS
Laser power	1000W/2000W/3000W	
Maximum loading sheet size	3000*1500mm	4000*2000mm
Minimum loading sheet size	1200*1000mm	
Maximum loading weight	200kg	300kg
Dimensions	9500*7200*4100mm	16000*12300*4100mm

Automatic feeding and unloading, continuous and efficient cutting

The automatic loading and unloading of the equipment is completed through the automatic feeding of the suction cup and the automatic unloading of the fork teeth, which can realize 24-hour uninterrupted power cutting, stable operation, automatic and intelligent, and is designed for high efficiency.



GAL SERIES

DOUBLE MACHINE AUTOMATIC LOADING AND UNLOADING

TECHNICAL PARAMETERS	
Machine model	LF3015GAL (Support Customization)
Laser power	1000W/2000W/3000W/6000W
Dimensions	14805*8182*4422mm
Maximum loading plate thickness	6mm
Minimum loading plate thickness	1mm
Maximum workpiece weight	200Kg
Maximum loading sheet size	3000*1500mm

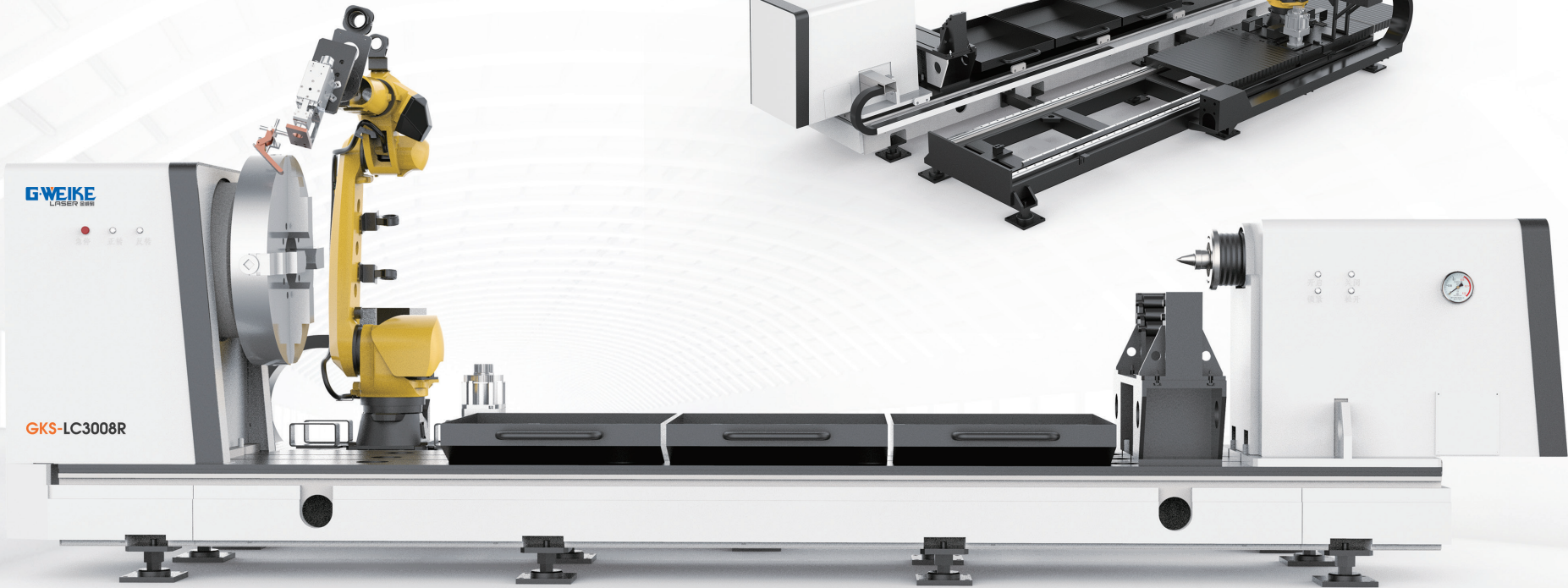
Collaboration of dual-machines, continuous improvement of efficiency

One for two, four stations, using a unique dual-machine interconnection mode to achieve high-speed feeding, cutting, and unloading; stable operation and high-speed production, especially suitable for mass production of medium and thin plates.



GKS-LC3008R

ROBOT INTELLIGENT LASER HIGH-SPEED CLADDING



Precise cladding, turning waste into treasure

Improve the surface wear resistance, corrosion resistance and oxidation resistance of parts, repair worn parts, and further extend the service life of parts.

Wide application, energy saving and environmental protection

It supports laser cladding repair of shaft parts, supporting equipment accessories, and mining equipment accessories, with simple operation, energy saving and environmental protection.

TECHNICAL PARAMETERS	
Machine model	GKS-LC3008R
Laser power range	3000W-6000W
Axle diameter	Φ≤800mm
Equipment maximum load	≤3000kg
The maximum positioning speed of the device	60m/min
Equipment positioning accuracy	±0.05mm/m
Repeat positioning accuracy	±0.03mm/m
Length of processing workpiece	≤3000mm
Equipment system	PLC (Omron)
Cladding head	Everest Broadband Cladding Head



Automation, high efficiency, easy operation , solve traditional bending problems.

GKS-BC0315

BENDING CENTER

Flexible and fast bending , improving efficiency

The fastest is 0.2 seconds/knife, which is 260% higher than the traditional bending machine

Simple operation, automatic and intelligent, no need to change the tool. The complex shapes of stainless steel, cold-rolled sheet and aluminum sheet are formed at one time.

No consumables, low maintenance cost.

Sample display



TECHNICAL PARAMETERS			
Number of axes	Standard 10 axis	Feeding structure	Suction cup type
Maximum bending length	1500mm	Maximum bending height	170mm
Minimum Bend Single Side Dimensions	180mm	Maximum sheet length	1600mm
Maximum sheet width	1250mm	Minimum forming size of four sides	410*340mm
Bilateral Minimum Forming Dimensions	340mm	Minimum arc radius	1.2mm
Minimum continuous bending speed	0.2S	Maximum feeding speed	120m/min
Bending angle	0-180°	Bending capacity	Carbon steel plate : width 1500mm thickness 1.5mm Stainless steel plate : width 1500mm thickness 1mm Aluminum plate : width 1500mm thickness 2mm
The rated voltage	380VAC	Peak power	15KW
Average power	2KW	Noise	About 60 decibels
Dimensions	3780*2420*2690mm	Total machine weight	About 9 tons



Provide a one-stop solution for welding and cleaning, which combines high efficiency, intelligence and precision.

WELDING AND CLEANING MACHINE SERIES

67/68

3D robot fiber laser cutting LF series



67/68

3D laser welding machine LW series



67/68

Laser multifunctional portable all-in-one machine



67/68

Hand held laser cleaning machine LC series



LF1800 | 3D ROBOT FIBER LASER CUTTING
ROBOT LF SERIES

Adopt Japan imported FANUC robot arm, supporting 360-degree cutting, accurately cutting non-standard shape materials.

TECHNICAL PARAMETERS	
Machine model	LF1800
Laser power	1000W/1500W/2000W/3000W
Laser type	Imported fiber laser source
Arm radius	1800mm
Repeated positioning accuracy	±0.05mm
Installation	Loor Stand/Hang Upside Down/Wall Mounted



LW1800 | 3D LASER WELDING
MACHINE LW SERIES

Laser welding can be used in the welding of carbon steel , stainless steel , aluminum , and other metals and their alloys.

TECHNICAL PARAMETERS	
Machine model	LW1800
Laser power	1000W-4000W
Transmission system	Fanuc
Cooling method	Water chiller
Operating temperature	0℃-40℃
Repeated positioning accuracy	±0.05mm
Rated voltage	220V/380V/50Hz/60Hz



LCW SERIES | THREE IN ONE HANDHELD LASER
WELDING, CLEANING, CUTTING MACHINE

The welding seam is smooth and beautiful, the cleaning effect is good, the floor space is small, and it is more flexible and efficient.

TECHNICAL PARAMETERS	
Machine model	LCW2000
Laser power	2000W
Laser wavelength	1064nm
Working voltage	single item 220V 50/60HZ Three items 380V 50/60HZ
Fiber length	10-20m (Support customization)
Power adjustment range(%)	10-100 (Gradient adjustable)
Laser head weight	0.7KG
Dimensions	1300*720*1200mm



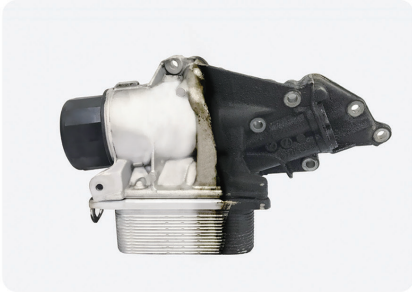
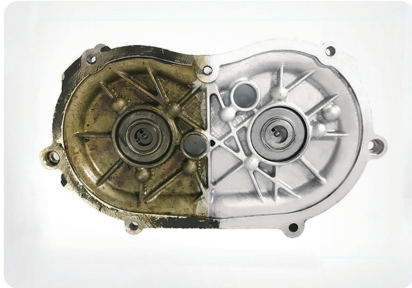
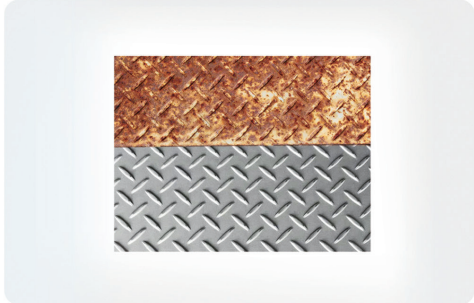
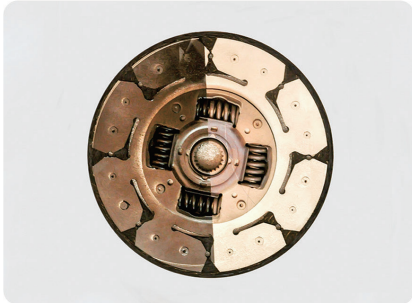
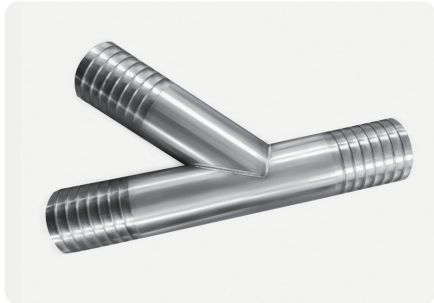
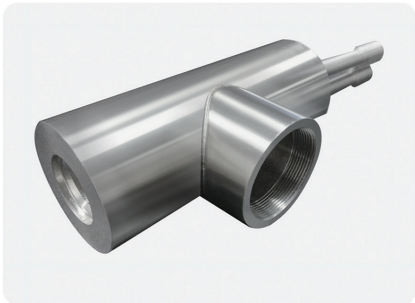
LC SERIES | HAND HELD LASER
CLEANING MACHINE LC SERIES

High cleanliness, no damage to the surface of the material, high flexibility, simple operation, easy to use.

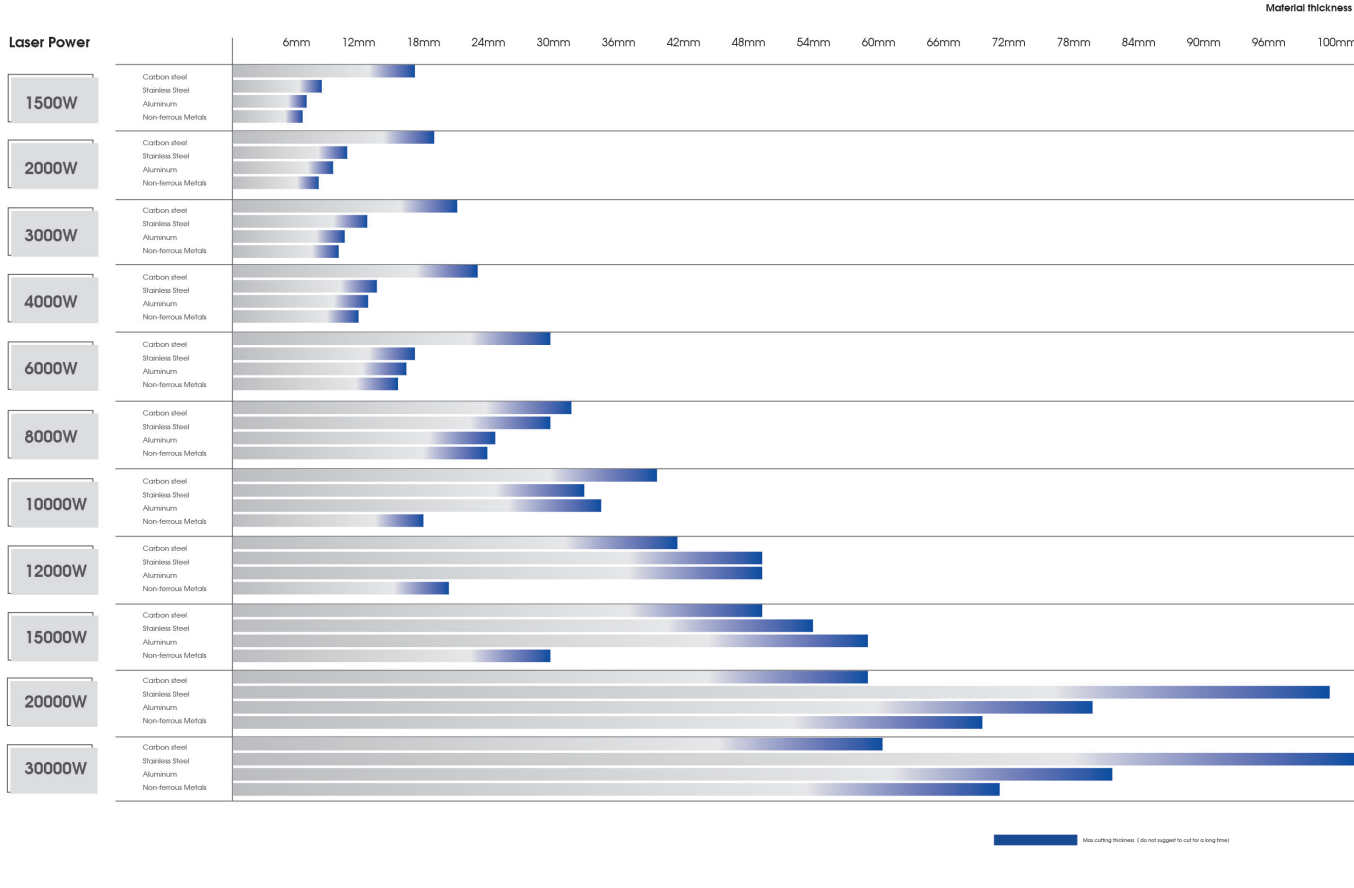
TECHNICAL PARAMETERS			
Machine model	LC200	LC300	LC500
Laser power	200W	300W	500W
Dimensions	1111*720*1230mm		
Scan width	10-80mm		
Power adjustment range	10-100 (Gradient adjustable)		
Moving type	Handheld		
Whole machine consumption	4000W (Including water chiller)		
Cleaning head weight	3.0KG		
Working voltage	220V/380V/50Hz/60Hz		



WELDING AND CLEANING MACHINE SAMPLE DISPLAY



Cutting ability analysis



Technical Parameters

Material	Thickness (mm)	1500W	2000W	3000W	4000W	6000W	8000W	12000W	15000W	20000W	30000W	40000W
		Speed (m/min)	Speed (m/min)	Speed (m/min)	Speed (m/min)	Speed (m/min)	Speed (m/min)	Speed (m/min)	Speed (m/min)	Speed (m/min)	Speed (m/min)	Speed (m/min)
Carbon Steel Air	1	10.0-20.0	20.0-30.0	28.0-35.0	30.0-38.0	35.0-42.0	38.0-45.0	45.0-60.0	50.0-70.0	60.0-100.0	70.0-100.0	75.0-100.0
	3	0.8-0.8	7.0-10.0	8.0-12.0	10.0-14.0	20.0-28.0	25.0-30.0	35.0-40.0	40.0-50.0	45.0-70.0	60.0-80.0	65.0-90.0
	5	1.5-1.0	2.0-4.0	2.5-4.5	3.0-5.0	5.0-8.0	8.0-10.0	10.0-15.0	15.0-20.0	20.0-30.0	30.0-40.0	35.0-50.0
	8			1.5-2.2	2.0-3.0	3.0-4.0	4.0-6.0	6.0-8.0	8.0-10.0	10.0-15.0	15.0-20.0	20.0-30.0
	10				1.0-2.2	1.0-2.2	1.0-2.0	1.0-2.0	1.0-2.0	1.0-2.0	1.0-2.0	1.0-2.0
	12											
	16											
	20											
	25											
	30											
	40											
	50											
Carbon N ₂	1	18.0-25.0	22.0-30.0	25.0-38.0	30.0-44.0	35.0-48.0	40.0-70.0	66.0-80.0	70.0-90.0	80.0-95.0	83.0-100.0	86.0-100.0
	2	3.6-5.0	5.0-6.0	5.5-7.0	5.5-7.2	6.0-8.25	6.8-7.2	7.2-7.8	7.5-8.2	7.8-8.5	8.0-10.0	8.5-10.0
	3	2.8-3.8	3.5-4.5	3.7-5.5	4.0-5.5	4.5-6.5	5.0-7.0	5.5-7.0	6.0-7.5	6.5-8.0	7.0-8.5	7.5-9.0
	4	2.3-3.5	2.8-4.0	3.0-4.5	3.2-4.8	3.5-5.0	4.0-5.5	4.5-6.0	4.8-6.5	5.0-6.5	5.5-6.5	6.0-7.0
	5	1.6-2.5	2.0-3.0	2.2-3.2	2.4-3.2	2.6-3.2	3.0-4.2	3.5-4.8	4.0-5.5	4.5-6.0	5.0-6.0	5.5-6.5
	6	1.4-1.8	2.2-2.5	2.2-2.8	2.5-3.5	2.6-3.5	3.0-3.4	3.5-4.0	3.8-4.5	4.0-4.5	4.2-4.8	4.5-5.2
	8	0.8-1.3	1.3-1.8	1.6-2.8	2.0-2.8	2.0-2.8	2.6-3.0	2.8-3.5	3.0-4.0	3.5-4.0	4.0-4.5	4.5-5.0
	10	0.8-1.2	1.2-1.5	1.2-1.6	1.2-1.6	1.2-1.6	1.2-1.6	1.2-1.6	1.2-1.6	1.2-1.6	1.2-1.6	1.2-1.6
	12	0.7-1.0	0.8-1.0	1.0-1.2	1.0-1.2	1.0-1.2	1.0-1.2	1.0-1.2	1.0-1.2	1.0-1.2	1.0-1.2	1.0-1.2
	16	0.5-0.7	0.6-0.8	0.6-0.9	0.7-1.0	0.7-1.0	1.2-1.4	1.4-1.6	1.7-2.0	1.9-2.3	2.0-2.5	2.1-2.6
	20			0.5-0.8			1.5-1.7	1.7-1.8	1.9-2.1	2.1-2.3	2.3-2.5	2.5-2.7
Carbon Steel O ₂	1											
	2											
	3											
	4											
	5											
	6											
	8											
	10											
	12											
	16											
	20											
	25											
Carbon Steel Air	1	18.0-30.0	20.0-35.0	32.0-40.0	35.0-50.0	55.0-70.0	65.0-75.0	70.0-85.0	80.0-95.0	83.0-100.0	85.0-100.0	87.0-100.0
	2	6.0-12.0	14.0-15.0	14.0-18.0	16.0-20.0	20.0-28.0	25.0-30.0	30.0-38.0	35.0-40.0	40.0-50.0	50.0-60.0	55.0-65.0
	3	3.0-4.0	5.0-7.0	6.0-12.0	8.0-14.0	10.0-18.0	12.0-20.0	15.0-25.0	20.0-30.0	25.0-35.0	30.0-40.0	35.0-45.0
	4	2.0-3.0	3.5-4.5	5.5-6.0	6.0-10.0	10.0-15.0	12.0-16.0	15.0-20.0	20.0-25.0	25.0-30.0	30.0-35.0	35.0-40.0
	5	1.2-1.8	1.8-2.5	3.5-5.0	4.5-6.0	6.0-10.0	8.0-12.0	10.0-15.0	12.0-18.0	15.0-22.0	20.0-28.0	25.0-32.0
	6	0.5-0.8	0.7-0.8	2.5-3.0	3.0-4.0	4.0-6.0	5.0-7.0	6.0-8.0	7.0-9.0	8.0-10.0	10.0-12.0	12.0-15.0
	8		0.5	1.2-1.5	1.8-3.0	4.5-6.0	5.5-6.0	6.0-11.0	8.0-12.0	10.0-16.0	20.0-24.0	22.0-25.0
	10			0.8-1.2	1.8-3.0	4.5-6.0	5.5-6.0	6.0-11.0	8.0-12.0	10.0-16.0	20.0-24.0	22.0-25.0
	12			1.4-1.8	2.5-3.5	5.5-6.0	5.5-6.0	6.0-11.0	8.0-12.0	12.0-15.0	13.0-16.0	15.0-18.0
	16						0.5					
	20											
Stainless Steel N ₂	1	20.0-26.0	27.5-33.0	31.0-38.5	33.0-45.0	50.0-65.0	60.0-66.0	70.0-80.0	75.0-90.0	80.0-100.0	82.0-100.0	87.0-100.0
	2	7.0-10.0	9.0-11.0	12.0-16.5	10.0-20.0	20.0-30.0	25.0-30.0	30.0-38.0	35.0-40.0	40.0-50.0	50.0-60.0	55.0-65.0
	3	4.5-5.5	5.0-6.5	7.0-10.0	20.0-28.0	28.0-35.0	30.0-38.0	40.0-48.0	45.0-50.0	50.0-60.0	60.0-70.0	65.0-75.0
	4	2.0-2.8	2.5-3.2	3.5-4.5	15.0-15.0	20.0-26.0	22.0-28.0	25.0-30.0	30.0-35.0	35.0-40.0	40.0-45.0	45.0-50.0
	5	1.5-2.0	1.5-2.0	1.8-2.4	4.0-5.5	8.0-13.5	12.0-14.0	15.0-20.0	18.0-22.0	20.0-28.0	25.0-30.0	29.0-32.0
	6	0.6-0.9	0.7-1.3	1.0-1.6	1.0-1.6	1.0-1.6	1.0-1.6	1.0-1.6	1.0-1.6	1.0-1.6	1.0-1.6	1.0-1.6
	8		0.3-0.6	1.2-2.0	1.6-2.8	4.0-5.5	7.0-7.5	7.5-8.5	7.5-8.5	10.0-17.0	18.0-22.0	20.0-23.0
	10											
	12											
	16											
	20											
	25											
Aluminum N ₂	1	15.0-27.5	22.0-31.0	25.0-30.0	28.0-32.0	35.0-45.0	40.0-50.0	45.0-55.0	50.0-60.0	55.0-65.0	60.0-70.0	65.0-75.0
	2	7.0-8.5	8.0-9.5	10.0-12.0	10.0-12.0	12.0-15.0	12.0-15.0	15.0-20.0	18.0-22.0	20.0-25.0	25.0-30.0	30.0-35.0
	3	2.5-4.0	3.0-4.5	4.0-6.0	4.0-6.0	5.0-7.0	5.0-7.0	6.0-8.0	6.0-8.0	8.0-10.0	10.0-12.0	12.0-15.0
	4	1.0-1.6	1.0-1.6	1.0-1.6	1.0-1.6	1.0-1.6	1.0-1.6	1.0-1.6	1.0-1.6	1.0-1.6	1.0-1.6	1.0-1.6
	5	0.6-0.9	1.0-1.3	2.0-3.0	4.0-5.0	5.0-7.0	10.0-10.0	10.0-10.0	10.0-10.0	10.0-10.0	10.0-10.0	10.0-10.0
	6	0.6-0.9	0.6-0.9	1.5-2.0	2.5-3.0	3.5-4.0	5.0-7.0	10.0-12.0	10.0-12.0	10.0-12.0	10.0-12.0	10.0-12.0
	8		0.6-0.7	1.5-2.0	2.5-3.0	3.5-4.0	5.0-7.0	10.0-12.0	10.0-12.0	10.0-12.0	10.0-12.0	10.0-12.0
	10			0.9-1.4	0.8-1.6	1.0-1.2	1.2-2.5	2.5-3.0	3.5-4.0	4.0-5.0	5.0-6.0	6.0-7.0
	12											
	14											
	16											
	20											
Brass N ₂	1	10.0-22.0	20.0-27.0	20.0-28.0	25.0-30.0	30.0-40.0	35.0-45.0	38.0-50.0	40.0-55.0	45.0-60.0	50.0-65.0	60.0-75.0
	2	4.0-5.5	5.0-6.5	5.0-6.5	5.0-6.5	5.0-6.5	5.0-6.5	5.0-6.5	5.0-6.5	5.0-6.5	5.0-6.5	5.0-6.5
	3	1.1-1.5	1.1-1.5	1.1-1.5	1.1-1.5	1.1-1.5	1.1-1.5	1.1-1.5	1.1-1.5	1.1-1.5	1.1-1.5	1.1-1.5
	4	0.6-0.9	0.6-0.9	0.6-0.9	0.6-0.9	0.6-0.9	0.6-0.9	0.6-0.9	0.6-0.9	0.6-0.9	0.6-0.9	0.6-0.9
	5											
	6											
	8											
	10											
	12											
	16											
	20											
	25											

Cost Analysis

Laser power	Assisted gas Consumption		Option I:Using air compressor Cutting Stainless steel	Option II :using O ₂ Cutting Stainless steel	Option III :using N ₂ Cutting Stainless steel
2000W	Power Consumption	Laser power	6kw	6kw	6kw
		Water Chiller Group	3.3kw	3.3kw	3.3kw
		Host Machine	6kw	6kw	6kw
		Dust Exhausting Equipment	3kw	3kw	3kw
	Consumable Part		2.5 RMB/h	2.5 RMB/h	2.5 RMB/h
	Gas Consumption		15kw	(About) 10 RMB/h	(About) 35 RMB/h
	Total Power		33.3 kw	18.3 kw	20.7 kw
	Average Power Consumption(Take 60% Cutting Efficiency)		33.3x60% = 19.98 kw	18.3x60% = 10.98 kw	18.3x60% = 10.98 kw
All Cost(1RMB/kwh)		19.98+2.5=22.48RMB/h	10.98+10+2.5=23.48RMB/h	10.98+35+2.5=48.48RMB/h	

3000W	Power Consumption	Laser power	9kw	9kw	9kw
		Water Chiller Group	5kw	5kw	5kw
		Host Machine	10kw	10kw	10kw
		Dust Exhausting Equipment	3kw	3kw	3kw
	Consumable Part		2.5 RMB/h	2.5 RMB/h	2.5 RMB/h
	Gas Consumption		15kw	(About) 10 RMB/h	(About) 35 RMB/h
	Total Power		42 kw	27kw	27.7 kw
	Average Power Consumption(Take 60 %Cutting Efficiency)		42x60%=25.2kw	27x60% =16.2 kw	27x60% =16.2 kw
All Cost(1RMB/kwh)		25.2+2.5=27.7 RMB/h	16.2+10+2.5=28.7RMB/h	16.2+35+2.5=53.7RMB/h	

6600W	Power Consumption	Laser power	18kw	18kw	18kw
		Water Chiller Group	7.5kw	7.5kw	7.5kw
		Host Machine	10kw	10kw	10kw
		Dust Exhausting Equipment	3kw	3kw	3kw
	Consumable Part		2.5 RMB/h	2.5 RMB/h (About)	2.5 RMB/h
	Gas Consumption		15kw	10 RMB/h	(About) 35 RMB/h
	Total Power		53.5 kw	38.5 kw	38.9 kw
	Average Power Consumption(Take 60% Cutting Efficiency)		53.5x60% =32.1 kw	38.5x60% =23.1 kw	38.5x60% =23.1 kw
All Cost(1RMB/kwh)		32.1+2.5=34.6 RMB/h	23.1+10+2.5=35.6RMB/h	23.1+35+2.5=60.6RMB/h	

Remark: The price of electricity and gas in the form will vary according to different regions. All the above prices are for reference only.

Cost Analysis

Laser power	Assisted gas Consumption		Option I:Using air compressor Cutting Stainless steel	Option II :using O ₂ Cutting Stainless steel	Option III :using N ₂ Cutting Stainless steel
12000W	Power Consumption	Laser power	36kw	36kw	36kw
		Water Chiller Group	14kw	14kw	14kw
		Host Machine	16kw	16kw	16kw
		Dust Exhausting Equipment	5kw	5kw	5kw
	Consumable Part		2.5 RMB/h	2.5 RMB/h	2.5 RMB/h
	Gas Consumption		15kw	(About) 10 RMB/h	(About) 35 RMB/h
	Total Power		86 kw	71 kw	71 kw
	Average Power Consumption(Take 60% Cutting Efficiency)		86x60% =51.6 kw	71x60% =42.6kw	71x60% =42.6kw
All Cost(1RMB/kwh)		51.6+2.5=54.1 RMB/h	42.6+2.5+10=55.1 RMB/h	42.6+2.5+35=80.1 RMB/h	

20000W	Power Consumption	Laser power	80kw	80kw	45kw
		Water Chiller Group	20kw	20kw	20kw
		Host Machine	16kw	16kw	16kw
		Dust Exhausting Equipment	5kw	5kw	5kw
	Consumable Part		2.5 RMB/h	2.5 RMB/h	2.5 RMB/h
	Gas Consumption		15kw	(About) 10 RMB/h	(About) 35RMB/h
	Total Power		136kw	121 kw	121 kw
	Average Power Consumption(Take 60% Cutting Efficiency)		136x60% =81.6 kw	121 x60% =72.6 kw	121 x60% =72.6 kw
	All Cost(1RMB/kwh)		81.6+2.5= 84.1 RMB/h	72.6+10+2.5=75.1RMB/h	72.6+35+2.5=110.1RMB/h

30000W	Power Consumption	Laser power	85kw	85kw	85kw
		Water Chiller Group	32kw	32kw	32kw
		Host Machine	16kw	16kw	16kw
		Dust Exhausting Equipment	11kw	11kw	11kw
	Consumable Part		5.0RMB/h	5.0 RMB/h	5.0 RMB/h
	Gas Consumption		37kw	(About) 20 RMB/h	(About) 35RMB/h
	Total Power		181 kw	144 kw	144 kw
	Average Power Consumption(Take 60% Cutting Efficiency)		181x60% =108.6kw	144x60% =86.4kw	144x60% =86.4kw
All Cost(1RMB/kwh)		108.6+5.0=113.6 RMB/h	86.4+5.0+20=111.4 RMB/h	86.4+5.0+35=126.4 RMB/h	

40000W	Power Consumption	Laser power	113kw	113kw	113kw
		Water Chiller Group	40kw	40kw	40kw
		Host Machine	20kw	20kw	20kw
		Dust Exhausting Equipment	11kw	11kw	11kw
	Consumable Part		5.0RMB/h	5.0 RMB/h	5.0 RMB/h
	Gas Consumption		37kw	(About) 20 RMB/h	(About) 35RMB/h
	Total Power		221 kw	184 kw	184 kw
	Average Power Consumption(Take 60% Cutting Efficiency)		221x60% =132.6kw	184x60% =110.4kw	184x60% =110.4kw
All Cost(1RMB/kwh)		132.6+5.0=137.6 RMB/h	110.4+5.0+20=135.4 RMB/h	110.4+5.0+35=150.4 RMB/h	

WORLD TOUR
EXHIBITION



QUALITY COMES FROM MULTIPLE GUARANTEES

Standardized processes for high-quality delivery

Equipment production and processing whole process monitoring system

Sheet metal processing production system

Spare parts installation standard system

Parts assembly process system

Equipment Assembly Standardization System

Production review processing system

Strict control of the entire processing process

01

Incoming testing

02

Bed thermal aging treatment

03

Large gantry milling

04

Rail installation and linear monitoring

05

Rack installation and balance monitoring

06

Machine quality inspection

Professional engineer team to serve you

100+

service network

30min

quick response

24/7h

Online

*The appearance of the equipment is subject to the actual delivery *All technical parameters are subject to the technical solution provided

STRATEGIC PARTNERS

